

DAILY RESEARCH, 4 AGUSTUS 2020

PT PROFINDO SEKURITAS INDONESIA

**GD PERMATA KUNINGAN LT 19
JL KUNINGAN MULIA KAV 9C GUNTUR SETIABUDI JAKARTA SELATAN 12980**

TELP +62 21 8378 0888

EMAIL : CUSTOMERSERVICE@PROFINDO.COM

WWW.PROFINDO.COM | PROCLICK.PROFINDO.COM

MARKET MOVERS



Bursa saham AS ditutup menguat setelah didorong kinerja emiten kuartal kedua yang diperkirakan lebih tinggi dibanding ekspektasi. **DOW +0.89%, S&P +0.72%, NASDAQ +1.47%**

Bursa saham Eropa ditutup kompak menguat setelah rilis data manufacturing China dan Spanyol yang meningkat. **Indeks DAX +2.71%, FTSE _2.29%, CAC +1.93%**

Bursa Saham Asia dibuka mayoritas mmenguat setelah rilis data Manufakturing China yang naik melebihi estimasi. **Hang Seng -0.56%, KOSPI =1.34%, Nikkei +1.51%**

Harga minyak mentah dunia melemah setelah OPEC dan negara-negara produsen minyak mentah berencana meningkatkan produksi. Harga emas ditutup menguat tipisw setelah data manufacturing AS dan China yang meningkat. **WTI -0.51%, Brent Oil 0%, Gold +0.31%.**

IHSG pada perdagangan hari ini diperkirakan akan **BULLISH** dengan Range pergerakan **4928-5157** dengan saham-saham yang dapat diperhatikan : **UNVR CPIN SMBR GJTL MNCN ERAA**

MARET DATA

AMERIKA

DOW 30	26,664.40	+236.08	+0.89%
S&P 500	3,294.61	+23.49	+0.72%
NASDAQ	10,902.80	+157.52	+1.47%

EUROPE

DAX	12,646.98	+333.62	+2.71%
FTSE 100	6,032.85	+135.09	+2.29%
CAC 40	4,875.93	+92.24	+1.93%

ASIA

SHANGHAI	3,367.93	-0.03	1.75%
HANGSENG	24,458.13	-137.22	-0.56%
SET	1,321.23	-7.30	-0.55%
KOSPI	2,281.28	+30.24	+1.34%
JCI	5,006.22	-143.40	-2.78%
NIKKEI	22,529.50	+334.12	+1.51%
ASX	6,057.80	+131.70	+2.22%

COMMODITIES

GOLD	1,980.90	+6.20	+0.31%
WTI OIL	40.80	-0.21	-0.51%
BRENT OIL	43.89	0.00	0.00%
COAL	61.95	+70	+2.52%
PALM OIL	2850	+50	+1.83%
TINS	17,850.00	-7.50	-0.04%
NICKEL	13,932.50	-22.50	-0.16%

EVENT & ECONOMIC CALENDER

ECONOMIC CALENDER :

INDONESIA

30820	MARKIT PMI MANUFACTURING (JUL) INFLATION RATE (MoM) JUL TOURIST ARRIVAL (YoY) JUN
50820	LOAN GROWTH (YoY) JUN GDP GROWTH (YoY) JUL BUSSINES CONFIDENCES Q2
60820	CONSUMER CONFIDENCE (JUL)

GLOBAL

030820	JPN GDP Q1 (QoQ) GERMAN MARKIT PMI MANUFACTURING (JUL) BRITISH MARKIT PMI MANUFACTURING (JUL) FRANCE MARKIT PMI MANUFACTURING (JUL) EUROPE MARKIT PMI MANUFACTURING (JUL) US MARKIT PMI MANUFACTURING (JUL)
040820	KOREA INFLATION RATE (MoM) JUL JAPAN CORE CPI (JUL) AUSTRALIA TRADE BALANCE (JUN) AUSTRALIA RETAIL SALES (JUN) EUROPE PPI (MoM) JUN
050820	US API CRUDE OIL STOCK CHANGE HONG KONG MARKIT PMI (JUL) EUROPE RETAIL SALES (MoM) JUN BANK OF JAPAN GOV KURODA SPECH US TRADE BALANCE (JUN)
060820	KOREA CURRENT ACCOUNT (JUN) BANK OF ENGLAND INTEREST RATE DECISION BANK OF ENGLAND QUANTITATIVE EASING US INITIAL JOBLESS CLAIMS
070820	CHINA TRADE BALANCE (JUL) GERMAN TRADE BALANCE (JUN) FRANCE TRADE BALANCE (JUN) US NONFARM PAYROLS (JUL)

CORPORATE ACTION :

DEVIDEN

040820	UNVR RP 107 (CUM 0408, PAYMENT 1908) SMSM RP 19 (CUM 0408, PAYMENT 2508) AKRA RP 50 (CUM 0408, PAYMENT 1308)
050820	PGLI RP 1 (CUM 0508, PAYMENT 2608) ABDA RP 60 (CUM 0508, PAYMENT 2608)
060820	XCID RP 0.7984 (CUM 060820, PAYMENT 2408) SRSN RP 2 (CUM 0608, PAYMENT 2808) INTP RP 500 (CUM 0608, PAYMENT 2808)

RUPS

30820	TOTO INDX BLUE APII
040820	WTON KIOS IPCC
050820	TPIA SMBR PURA PGJO MTPS INDO FPRZ DFAM DEAL CLAY BCIP APEX ANDI ACES
060820	RUIS MTLA BRPT BAPA AMFG
070920	SINI RODA RMBA REAL PEGE PANI MLIA LPGI BSMR AMAN

IPO

RIGTH ISSUE

JAKARTA COMPOSITE INDEX



PREVIOUS 3 AGUSTUS 2020

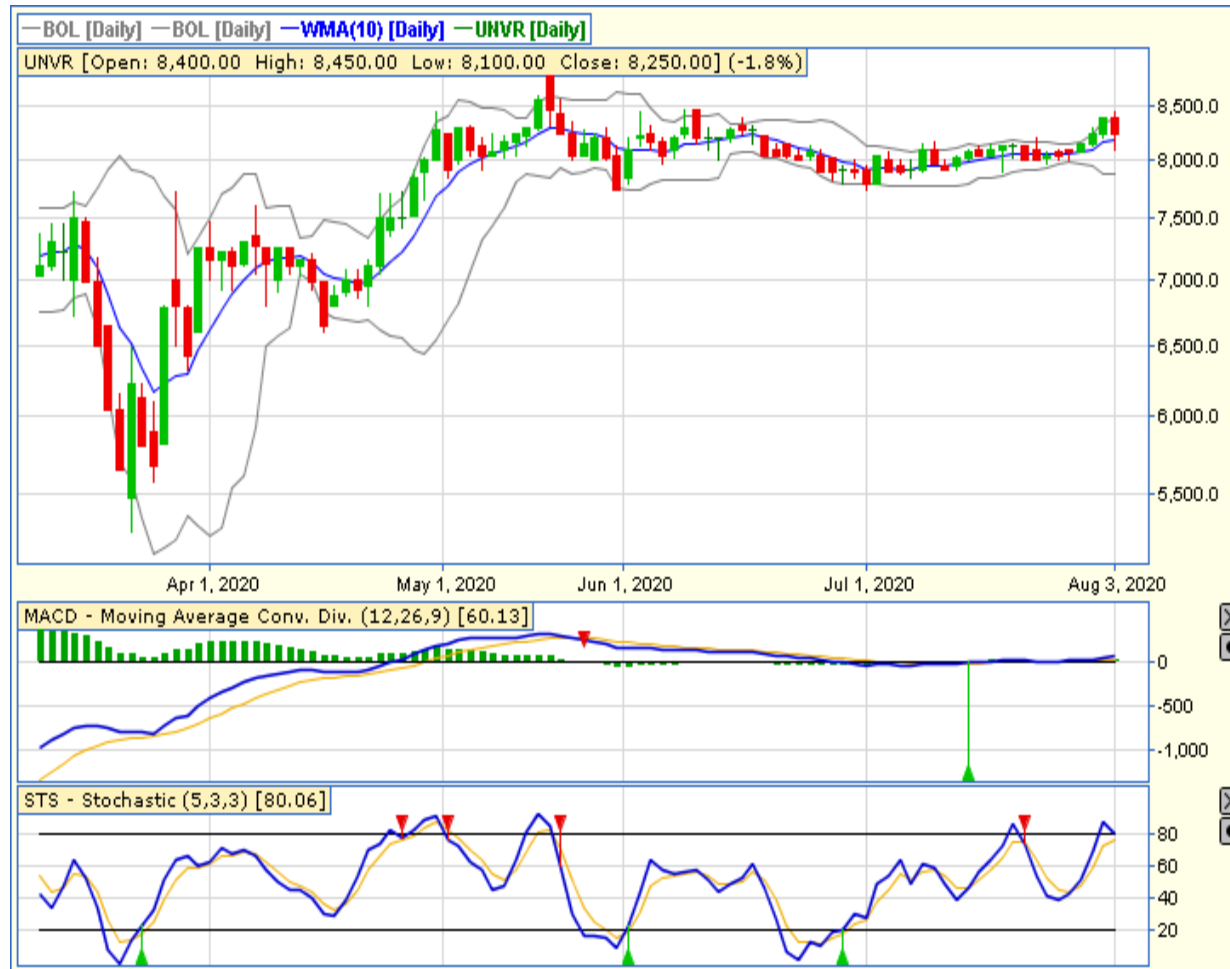
CLOSING	5006.223	-2.758%
TRANSACTION	IDR 10.9 TRILLION	
FOREIGN NETT	IDR 1.479 BIO (SELL)	

PREDICTION 4 AGUSTUS 2020

BULLISH (TECHNICAL REBOUND)
RANGE 4982-5157

BOTTOM FISHING AREA
STOCHASTIC : NETRAL
MACD : HISTOGRAM NEGATIF DAN DOWNTREND

TECHNICAL RECOMENDATION



UNVR – PT UNILEVER INDONESIA TBK

CLOSING 3/8/2020 RP 8250 (-1.8%)

**SELL ON STRENGTH
TAKE PROFIT 8450**

HAMMER
STOCHASTIC : UPTREND
MACD : HISTOGRAM POSITIF DAN UPTREND

TECHNICAL RECOMENDATION



CPIN – PT CHAROEN POKPHAND INDONESIA TBK

CLOSING 3/8/2020 RP 5925 (-4.8%)

ACCUM BUY

TARGET PRICE 6350

STOPLOSS < 5800

BOTTOM FISHING AREA

STOCHASTIC : DOWN TREND

MACD : HISTOGRAM NEGATIF DAN DOWNTREND

TECHNICAL RECOMENDATION



SMBR – PT SEMEN BATURAJA (PERSERO) TBK

CLOSING 3/8/2020 RP 458 (-6.9%)

BUY

TARGET PRICE 570

STOPLOSS < 450

BOTTOM FISHING

STOCHASTIC : OVERSOLD

MACD : HISTOGRAM POSITIF DAN UPTREND

TECHNICAL RECOMENDATION



GJTL – PT GAJAH TUNGGAL TBK

CLOSING 3/8/2020 Rp 505 (-6.5%)

BUY

TARGET PRICE 630

STOPLOSS < 505

BOTTOM FISHING

STOCHASTIC : DOWNTREND

MACD : HISTOGRAM POSITIF DAN UPTREND

TECHNICAL RECOMENDATION



MNCN – PT MEDIA NUSANTARA CITRA TBK

CLOSING 3/8/2020 RP 790 (-3.7%)

BUY

TARGET PRICE 1000

STOPLOSS < 765

HAMMER

STOCHASTIC : GOLDEN CROSS

MACD : HISTOGRAM NEGATIF DAN LOWER AREA

TECHNICAL RECOMENDATION



ERAA – PT ERAJAYA SWASEMBADA TBK

CLOSING 3/8/2020 RP 1490 (+1.4%)

**SELL ON STRENGTH
TAKE PROFIT 1570**

**HAMMER
STOCHASTIC : UPTREND
MACD : HISTOGRAM POSITIF DAN UPTREND**

RESEARCH TEAM



YULIANA

**RESEARCH ANALYST &
CORPORATE FINANCE**



DIMAS WP PRATAMA, CSA

TECHNICAL ANALYST

EQUITY CAPITAL MARKET TEAM



JESSIE JAMES

HEAD OF EQUITY SALES



PRASETYO NUGROHO

HEAD OF DEALING ROOM



GABRIELLA PRATIWY

HEAD OF ONLINE TRADING